



Welcome Guide Guide d'accueil



www.Chapleau.ca

Algoma
That real.

ONTARIO
Yours to discover

Welcome!

Un mot de bienvenue

Welcome to the Friendliest Town in the North.

Nous vous accueillons très chaleureusement dans la ville la plus sympathique du Nord

We invite you to read through the Welcome Guide where you will find interesting things to see and do, a list of annual events, a section on where to sleep, eat and shop, as well as the many services that are available in Chapleau.

Nous vous invitons à lire le Guide de bienvenue où vous trouverez des choses intéressantes à voir et à faire, une liste d'évènements annuels, une section sur l'hébergement, les restaurants, le magasinage ainsi que les nombreux services disponibles à Chapleau.

Enjoy the view of the Kebsquasheshing River from the boardwalk, relax in the beauty of Peace Park, or try out our hiking trails. Add fishing, snowmobiling or golfing to your itinerary and enjoy the best that Chapleau has to offer.


Appréciez la vue de la rivière Kebsquasheshing ainsi qu'à vous détendre dans le magnifique Parc de la Paix, ou à essayer nos sentiers pédestres. Ajoutez la pêche, la motoneige ou le golf à votre itinéraire et profitez de tout ce que Chapleau a à offrir.

Discover that Chapleau is the place where anyone can become lost in life's simple pleasures.

Découvrez que Chapleau est l'endroit où n'importe qui peut se perdre dans les simples plaisirs de la vie.


Mayor and Council, Township of Chapleau

Le Maire et Conseil, Canton de Chapleau



Find new ways to become lost in your passions!

Information Centre



Located in the historic Centennial Museum on Monk Street.

www.chapleau.ca | 705-864-1330

Table of Contents

Table des matières

9th Edition



Photo Credit: Justina Duliban

Welcome! / Un mot de bienvenue.....	1
Map (Chapleau Downtown) / Carte (Centre-ville de Chapleau).....	3
Getting to Chapleau / Arriver à Chapleau.....	5
A Local Pageant Sensation By Emma Morrison.....	7
Annual Events / Évènements Annuels.....	9
Accommodations / Hébergement.....	12
Restaurants / Restaurants.....	13
Community Wellness / Bien-être communautaire.....	16
Community Services / Services communautaires.....	21
Local Clubs / Clubs locaux.....	22
Municipal Parks / Les parcs municipaux.....	23
Refuse Collection / Collection des déchets.....	24
Winter Fun / Plaisir d'hiver.....	27
Summer Fun / Plaisir d'été.....	28
Provincial Parks / Les parcs provinciaux.....	29
Map (Algoma) / Carte (Algoma).....	34

Special Thank You:

Our Welcome Guide features local pictures. Thank you to everyone that allowed the use of them. Photo credit from the 2023 Photo Challenge is given on each selected picture.

Published by the/ Publié par le
Corporation of the Township of Chapleau/ Canton de Chapleau
 20 Pine Street West/ 20, rue Pine Ouest
 Chapleau, Ontario, Canada P0M 1K0
 705-864-1330

2023 Photo Challenge
 Winning Cover Photo
By: Katie Hatton



DOWNTOWN



Become lost in life's simple pleasures

Chapleau Downtown Legend

-  Snowmobile Trail
-  Hiking Trail
-  Municipal building
-  Accommodation
-  Restaurant
-  Retail store
-  Healthcare facility
-  Point of interest
-  Municipal Airport
-  Public Boat Launch/
Waterfront Park
-  Recreation Centre
-  Peace Park
-  Hiking Trail
-  Golf Course
-  Jacquislain Park/
Grinton Park

- 1 Chapleau Ski Club
- 2 Aux Trois Moulins Motel & Restaurant
- 3 Kebsquasheshing Golf Club
- 4 The Beer Store
- 5 Township of Chapleau Civic Centre, Chapleau Hub
Café and Bar
- 6 Riverside Motel on the Chapleau River
- 7 Chapleau Valu Mart
- 8 Chapleau Dental Suite
- 9 Michael Levesque Trail
- 10 The Bargain Shop, Centre Culturel Louis
Hémon, Chapleau Métis Council
- 11 Bridgeview Motel
- 12 Dominion Family Restaurant, The Wood's Spa
- 13 Village Shops, The Source, Pampered Paradise
Aesthetics
- 14 Home Hardware, RBC, The Train Station Fitness
- 15 Kwik-Way Confectionary, Northern Credit Union,
Guardian Model Drug Store, Canada Post, UCFO
- 16 Subway, LCBO
- 17 Chapleau Motel
- 18 The Birch Tree House
- 19 Cavalier Motel
- 20 Chapleau Travel Informtaion Centre/Museum
- 21 Services de santé de Chapleau Health Services,
Chapleau Medical Dental Centre
- 22 Earl J. Freeborn Field of Dreams
- 23 NAPA Auto Parts, Executive Suites Inn
- 24 Valentine Farms Bed & Breakfast
- 25 Chapleau Cree Pimii Kamik Gas Bar
- 26 Chapleau Cree First Nation
- 27 ESSO Gas Bar, Pizza Hut Express, KFC Express
- 28 Chapleau Inn & Suites
- 29 101 Gas Station & Trading Post
- 30 Brunswick House First Nation
- 31 Chapleau Ojibwe First Nation



Getting to Chapleau | Arriver à Chapleau



Approximate Distances to Chapleau:

Wawa, ON	140 km / 87 mi
Timmins, ON	200 km / 124 mi
Thessalon, ON	225 km / 140 mi
Sault Ste. Marie, ON	314 km / 195 mi
Kapuskasing, ON	365 km / 228 mi
Sudbury, ON	447 km / 278 mi
Rouyn-Noranda, QC	415 km / 258 mi
Thunder Bay, ON	625 km / 388 mi
Barrie, ON	695 km / 432 mi
Toronto, ON	799 km / 496 mi
Ottawa, ON	895 km / 556 mi
Niagara Falls, ON	898 km / 558 mi
Grand Rapids, MI	725 km / 450 mi
Detroit, MI	807 km / 501 mi
Sarnia, ON	815 km / 506 mi
Milwaukee, WI	890 km / 553 mi
Duluth, MN	920 km / 571 mi
Fort Wayne, IN	925 km / 575 mi



Insurance that fits

At BrokerLink, we're more than just insurance. The heart of our business has been and always will be, to help people protect what is important to them.

Ask us about coverage for:

- Home
- Auto
- Business
- Farm and machinery
- Motorcycle
- Tenant
- Condominium
- Recreational vehicles
- Seasonal property
- Identity theft

Contact us for a free, no-obligation insurance quote.

1.800.713.8158
BrokerLink.ca





Infrastructure creates opportunity for everyone

Everything we do is designed to deliver a better world. Uplifting communities, improving access, sustaining our planet. We partner with clients to turn ambitions into actions.

aecom.com/ca



PRODUITS FORESTIERS


GREENFIRST

FOREST PRODUCTS

LET'S GO CAMPING

LINAMAC LODGE & TRAILER PARK

Featuring: Campgrounds, Cabin Rentals, Hunting & Fishing Packages
www.linamac lodge.com



Located off of Hwy 129 at Lina Mac Road and Lake Louise

A Local Pageant Sensation

By Emma Morrison

My parents moved from Moose Cree First Nation to Chapleau Ontario one year before I was born in 1999. From 2000 to 2018 I lived in a small northern town and was able to experience life growing up surrounded by six great things; family, friends, community, nature, fresh air, and peace. My family really valued being on the land. This meant that most of my weekends were spent at our camp, going four-wheeling, sledding, hunting, fishing, walking in the bush, and all that fun stuff! I currently live in the city of Ottawa, but looking back on my memories from Chapleau, I can really appreciate how easily accessible it was to enjoy the outdoors.

In 2016, I received a Facebook message from a pageant director asking if I would be interested in competing in her annual beauty pageant hosted in Sudbury, Ontario. At first, this opportunity scared me. The idea of being a delegate in a pageant seemed so far outside my comfort zone. I didn't grow up wearing heels outside the house or watching Miss America, instead, I grew up in a town where practically everyone owns a fishing rod. However, with the support of my family and friends, I messaged back the pageant director confirming my interest in her competition. This led to the opportunity to represent Chapleau at the Miss Northern Ontario Regional Canada Pageant in 2017. After announcing that I was running for the title, the amount of support I received from the community members was incredible! For instance, as part of my duties as a delegate, I had to raise a minimum of \$500 worth of sponsors. Thanks to the amazing businesses, organizations, and people in Chapleau, I obtained over \$3000 in value from sponsors!



Ever since the beginning of my pageant journey, the community supported me along the way. I truly believe that thanks to the fantastic community that stood behind me, played a major role in my success within Pageantry.

Six years later, I was able to bring the titles of Miss Northern Ontario 2017, Miss Teenage Canada 2017, and my current title Miss World Canada 2022, back to our small northern community of Chapleau.

All throughout my pageantry journey, I have felt genuine support from our town that I believe I would not have received if coming from a bigger city. This is why I feel so thankful to have grown up in a town that gives so much to its youth to help them achieve their aspirations and goals.

As I move forward to represent Canada at the Miss World Womens Empowerment Festival in 2024. I know for certain that I will have my community cheering me on back home. It is truly special to have been lucky enough to grow up in a town that offers so much love and generosity. Although Chapleau is small on the map, our members make a huge impact on each other through small-town kindness and courtesy. I am forever grateful to call Chapleau home.



Annual Events

Évènements Annuels

Chapleau Pike Ice Fishing Derby (2nd Weekend in February)



Hosted annually by the Chapleau Rotary Club, the Pike Ice Fishing Derby is one of the reasons for our reputation as an ultimate fishing town. For regular updates, find the Derby on Facebook at www.fb.com/PikelceFishingDerby.



Tournoi annuel de pêche au brochet sur glace de Chapleau (2e fin de semaine de février)

Organisé chaque année par le Club Rotary de Chapleau, le tournoi de pêche sur glace accentue notre réputation comme étant une ville de pêche ultime. Pour les mises à jour du tournoi, rendez-vous sur www.fb.com/PikelceFishingDerby.



The CP Rail Holiday Train (Nov/Dec)

It's a good show, a good time, and a good cause. When the Holiday Train rolls through, the community comes together with donations for local food banks while CP Rail provides entertainment with a boxcar for a stage!

Trains des Fêtes du Canadien Pacifique

C'est un bon spectacle pour une bonne cause. Lorsque le Train des Fêtes arrête à la gare, la communauté se réunit avec des dons pour les banques alimentaires locales tandis que le chemin de fer CP offre du divertissement avec un wagon comme estrade! C'est spectaculaire!



Canada Day Celebrations (July 1st)

The biggest day on our calendar is Canada Day, and Chapleau goes all out to show our love of country. There are activities for all ages and don't miss the fireworks that start at dusk!

Fête du Canada (1er juillet)

La journée la plus célébrée à Chapleau est la Fête du Canada et les gens de Chapleau vont tout faire pour souligner l'amour de leur beau pays. Il y a des activités pour tous les âges et il ne faut surtout pas manquer les feux d'artifice qui commencent au crépuscule!

Taste of the North Winter Carnival (3rd Weekend in February)



The Taste of the North Winter Carnival is a long-standing tradition that brings the community together during the cold of winter. A full schedule of events for all ages is planned including community dinners, broomball and hockey tournaments, a curling bonspiel and much more.

Le Carnaval d'hiver « À la saveur du Nord » de Chapleau (3e fin de semaine de février)

Le Carnaval d'hiver « À la saveur du Nord » est une tradition de longue date qui rassemble les gens de la communauté pendant le froid de l'hiver. Dans le calendrier d'évènements pour tous les âges, l'on y trouve des dîners communautaires, des tournois de ballon-balai sur glace et du hockey.

Chapleau Arts and Crafts Fall Fair (2nd Weekend of October)



Chapleau is a town of many talents, and once a year all the best talents attend the Arts and Crafts Fall Fair to show off and sell their wares at the Chapleau Recreation Centre at 4 Maple Street.

La Foire Artisanale D'Automne (2e fin de semaine d'octobre)

Chapleau est une ville aux multiples talents et une fois par année tous les meilleurs artisans et artisanes assistent à la foire d'automne afin de montrer et vendre leurs marchandises au Centre récréatif au 4, rue Maple.



Hunters' Ball (Weekend after Moose Hunt)

Every year the Centre Culturel Louis-Hémon hosts a Hunters' Ball to celebrate the end of the moose hunt. For more details contact 705-864-1126 or hemoninc@bellnet.ca.

Bal des Chasseurs (fin de semaine après la fin de la saison de chasse)

Chaque année, le Centre Culturel Louis-Hémon organise le Bal des Chasseurs pour célébrer la fin de la chasse à l'orignal. Pour plus de détails, contactez 705-864-1126 ou hemoninc@bellnet.ca.

Olde Fashioned Christmas (November)



Come out for hot chocolate and a chance to sit on Santa's lap! Each year, right downtown, Santa shows up. The tree is lit and Chapleau Downtown stays open a little longer so you can find the best gifts available at your local retailer.

Noël d'antan (Novembre)

C'est la soirée tant attendue par les jeunes enfants de la communauté. Un chocolat chaud à la main et une chance de s'asseoir sur les genoux du Père Noël! Chaque année, le Père Noël vient faire une visite au centre-ville. Les marchands ouvrent leurs portes à tous afin de donner la chance aux gens de se réchauffer et de magasiner pour trouver le cadeau idéal!

Skate with Santa



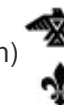
Chapleau Recreation Centre opens its doors to the public throughout the winter months for skating. Once a year, the night becomes even more special as Santa laces up his skates and joins the crowd for some good fun and exercise!

Patinage avec le Père Noël

Le Centre récréatif ouvre ses portes au public pendant les mois d'hiver pour le patinage. Une fois par année, l'activité devient encore plus spéciale, car le Père Noël lace ses patins et se joint à la foule pour avoir du plaisir et faire de l'exercice!

Other important dates:

National Aboriginal Day (June 21st)
Saint-Jean-Baptiste Day (June 24th)
Chapleau Cree Pow Wow (August 11-13th)
Franco-Ontarian Day (September 25th)



Autres dates importantes:

Journée nationale des Autochtones (21 juin)
Fête de la St-Jean (24 juin)
Chapleau Cree pow-wow (11-13 août)
Jour des Franco-Ontariens (25 septembre)

Accommodations

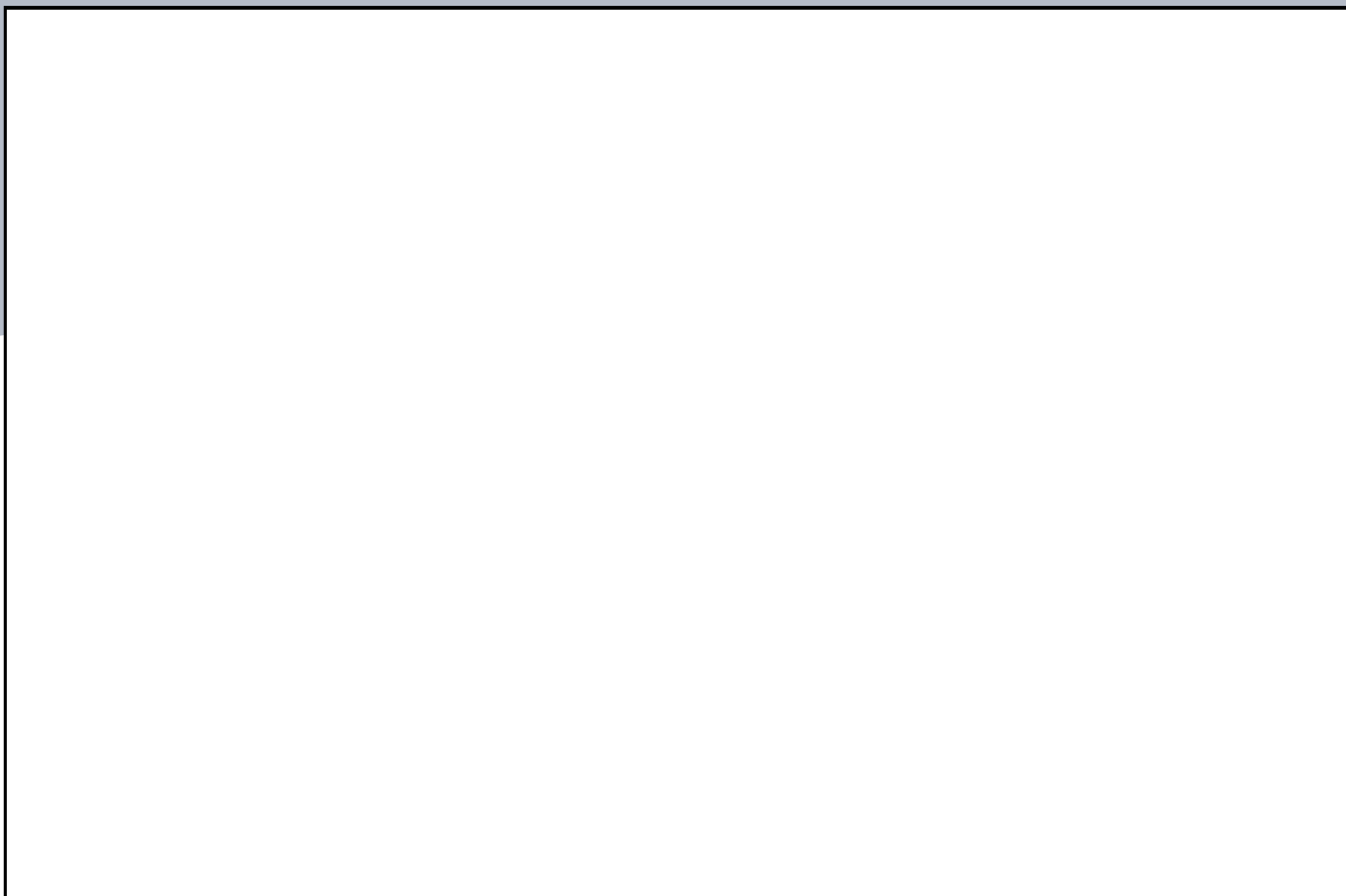
Hébergement



Every option exists: from superb motels to lakeside cottages. For more information on accommodation options go to www.chapleau.ca and follow the links to the Business Directory.

Différentes options d'hébergement sont disponibles telles que des motels ou des chalets au bord du lac. Pour plus de renseignements sur vos possibilités d'hébergement, allez à www.chapleau.ca et suivez les liens.

Motels and B&Bs	Address	Phone	Website
Aux Trois Moulins / Chapleau Inn / Riverside	154 Martel Road	705-864-1313	www.a3mriverside.ca
Bridgeview Motel	16 Birch Street	705-864-1311	
Cavalier Motel	98 Monk Street	705-864-0841	www.cavaliermotelon.ca
Chapleau Motel	72 Cedar Street	705-864-1647	
Crestview Guest House	38 Devonshire Street	705-860-1309	
Executive Suites Inn	200 Monk Street	705-860-0200	www.executive16suites.ca
Moose Horn Lodge	Sheppard Morse Road	705-864-1875	www.mooshorn.net
The Birch Treehouse B&B	75 Birch/36 Lansdowne Street	613-286-5652	www.thebirchtreehouse.ca
Valentine Farms Bed & Breakfast	8 Broomhead Road	705-864-1467	www.facebook.com/ValentinesFarmBB



Chapleau Auto Parts & Small Engines
163 Monk Street
Chapleau, ON 705-864-1222 or
1-877-427-1222



Restaurants



Restaurants	Location	Phone
Aux Trois Moulins	154 Martel Road	705-864-1313
Chapleau Hub Café & Bar	4 Pine Street W	705-904-1000
Dominion Family Restaurant	12 Birch Street	705-864-1311
KFC / Pizza Hut Express	418 Highway 129	705-864-0911
La Bienvenue Restaurant & Pub	200 Monk Street	705-860-0100
Subway	29 Lorne Street	705-864-2212
Open Seasonally		
Grumpy's Chipstand	22 Birch Street	705-465-9114
The Caddy Shack	100 Golf Course Road	705-864-0600

THE BIRCH TREE HOUSE

2 & 3 bedroom short-term rentals for business or pleasure in Chapleau

DAILY AND MONTHLY RATES

Contact us at (705) 465-3349
support@thebirchtreehouse.ca
Virtual tour
www.Facebook.com/thebirchtreehouse

COME VACATION WITH US

COMO LAKE RESORT

LOCATED IN THE CHAPLEAU GAME PRESERVE
Modern Cabins • Large Campsites (Water and 15 Amp Hookups)

Your Hosts: Jean(John) & Tracy Castonguay
P.O. Box 506, Chapleau ON, Canada, P0M 1K0 • 705-864-1476
www.comolakeresort.com • comolakeresort@xplornet.com

Royal Canadian Legion
Harry Searle Branch
No. 5
33 Young Street
Chapleau, Ontario
P0M1K0
(705) 864-0170

KERRY FUNERAL HOME LTD.

Valerie L. Kerry
MANAGING DIRECTOR/OWNER

140 CHURCHILL AVENUE, P.O. BOX 207, WAWA, ONTARIO P0S 1K0
TELEPHONE (705) 856-7340 FAX (705) 856-1292
TOLL FREE 1-800-439-4937
www.kerryfuneralhome.ca
kerryfuneralhome@shaw.ca

Executive Suites & La Bienvenue Restaurant and Pub
Call (705) 860 - 0200 to Reserve your Room
200 Monk Street, Chapleau , On, P0M 1K0

Canadian & Chinese Cuisine
L.L.B.O
(705) 860-0100

PRIVATE VIP DINING ROOM AVAILABLE FOR YOUR SPECIAL FUNCTIONS!
Occasionally Hookah Social
Scan QR code with your phone camera to order online, no app required

Dine In, Take-Out, Delivery & Catering
THINK OF US FOR ALL OF YOUR CATERING NEEDS!
WEDDINGS, BUSINESS MEETINGS, FAMILY RECEPTIONS, GET TOGETHERS AND PARTIES.
Online Order: <https://www.restaurantinchapleau.ca/>
Gift Cards (\$10, \$20, \$50, any amount)
Brunch and Dinner Buffet
<http://www.executive16suites.ca>

Follow Us on Social Media

Foods may contain nuts, pls notify before ordering.

K.R. McADAM SERVICES

12 BEECH STREET, BOX 193
CHAPLEAU, ONTARIO
P0M 1K0

Phone: (705) 864-1150

Monuments Carriere

Quality Granite . Home Service . Bilingual

ROGER CARRIERE

93 Aberdeen St s, Chapleau Ont. P0M1K0
Servicing Northern Ontario Since 2002.
Dessers le Nord de l'Ontario depuis 2002.
Tel: (705) 864-2053
(705-274-4525)
monumentscarriere.ca



EMPLOYMENT ONTARIO **EMPLOI ONTARIO**

The Manitoulin-Sudbury DSB promotes healthy communities through the planning, coordination, and management of municipal services and programs in the districts of Manitoulin and Sudbury.

In Chapleau, our DSB is responsible for the Ontario Works Program, Community Housing, Paramedic Services (Land Ambulance), Early Learning and Child Care Services, Our Kids Count, the Homelessness Prevention Program and Employment Ontario programs.

The Employment Ontario program can assist you with resume and cover letter writing, employer and occupation research, career assessments and referrals to other local agencies. We offer the Youth Job Connection programs (providing paid pre-employment training and a paid placement), wage subsidies as well as information sessions such as budgeting and social media awareness.

We offer free photocopying, faxing and computer access with internet and printing services. Phones are available in a private office for interviews.

For more information, follow us on Facebook at **Manitoulin-Sudbury District Services Board Employment Ontario Chapleau**, on our Instagram page **@manitoulintsudburydsb** or at www.msdsb.net.
Your job is out there. We can help you find it.

12 Birch Street East, Chapleau, ON, P0M 1K0
Telephone/Téléphone: (705) 864-0430 | Fax/Télécopieur: (866) 397-3334
chapleauiss@msdsb.net | <http://www.msdsb.net>



Community Wellness

bien-être communautaire

Organization	Address	Phone Number
Apano	8 Lorne Street N	705-864-0556
Centre Victoria pour femmes	Sudbury	1-877-336-2433
Chadwic Home	Wawa	1-800-461-2242
Chapleau and District Family Health Team	8 Broomhead Road	705-864-0210
Children's Aid Society	Sudbury	1-877-272-4334
Compass	34 Birch Street	1-800-815-7126
Kunuwininamo Child & Family Services	8 Lorne Street S	705-864-1600
Manitoulin Sudbury District Services Board	12 Birch Street	705-864-0430
Metis Nation Ontario Manitoulin Sudbury	61 Birch Street	705-864-0952
Public Health Sudbury and Districts	34 Birch Street	705-860-9200
Services De Santé De Chapleau Health Services	6 Broomhead Road	705-864-1520
Turning Point décisif	101 Pine Street	705-864-1919

Pour tous vos besoins en soins de santé.

Services de santé de
Chapleau Health Services

For all your healthcare needs.

www.sschs.ca

Delivering integrated health care services to Chapleau and neighbouring communities.
Nous offrons des services de soins de santé intégrés pour Chapleau et les communautés voisines.



Organization	Address	Phone Number
Pampered Paradise Esthetics	8 Birch Street	705-280-5476
Paula Lillo, Massage Therapist	paulalillo18@gmail.com	1-416-574-7563
Spa Services by Kathleen	154 Martel Road	705-864-1313
The Train Station Fitness	31 Birch Street	705-951-0575
The Wood's Spa	8 Birch Street	705-864-2444



101 Gas Station & Trading Post

**OPEN 7 DAYS A WEEK
7:00 AM - 9:00 PM**

FOR ALL YOUR TRAVEL NEEDS
Gas Diesel • Propane • Groceries • Bait
Giftshop • Beverages • Moccasins • Jackets

Hwy 101 East, P.O. Box 520 Chapleau, Ontario P0M 1K0
Trading Post 705-864-0330 Fax: 705-864-0660

SUPERIOR EAST / SUPÉRIEUR EST

We provide small business loans and counselling within the Superior East Region.
Nous offrons des prêts et des conseils d'affaires dans la région Supérieur Est.

**705.856-1105
1.800.387.5776**

**info@superioreastcfdc.ca
superioreastcfdc.ca**

Federal Economic Development Agency for Northern Ontario / Agence fédérale de développement économique pour le Nord de l'Ontario
Canada

Centre culturel Louis-Hémon
69, rue Birch C.P. 219
Chapleau (Ontario)
P0M 1K0
Tel. 705.864.1126
courriel: hemoninc@gmail.com

Diffusion de spectacles francophones

rtmckeerealty.com
FOR SALE

Rita T. McKee-Gavan
Broker of Record
24 Aberdeen St. S
P.O. Box 214
Chapleau, ON P0M 1K0

Cell: (705) 465-0147 Fax: (705) 864-1776

NESER INVESTMENTS INC
418 HWY # 129
CHAPLEAU ONTARIO P0M 1K0

705 - 864 - 0911 **705 - 864 - 2785**

705 - 864 - 0601

WE ARE LOCATED ON SNOWMOBILE TRAIL "F"
STOP IN AND SEE US FOR ALL YOUR NEEDS email: neser@bellnet.ca

FORMATION Plus

Prends une Nouvelle résolution dès maintenant...

- 1 Identifie ton objectif de formation
- 2 Inscris-toi et choisis des cours en lien avec ton objectif
- 3 Améliore tes compétences, connaissances et aptitudes
- 4 Poursuis des études postsecondaires, une formation en apprentissage ou un emploi

Contacte-nous dès maintenant pour plus d'information!!!
705.864.2763
formationplus@vianet.ca

Canada **EMPLOYMENT ONTARIO** **Ontario**



**Chapleau Cree
First Nation**

WAHCHAY, HELLO,
BIENVENUE, WELCOME

**CCFN
Small
Engine
Repair**



705-864-1045



**Pimii Kamik
Gas Bar
& Gift Shop**

*Located on the Chapleau Cree
First Nation*

7 DAYS A WEEK

**Authentic
Native Crafts**

705-864-0781

*Your
Propane
Refilling
Station*



**POW WOW
August
11th 12th 13th
2023**



 Ontario
Licenced
Motor Vehicle
Inspection Station



Chapleau Auto/Truck

Monday - Friday
8:30 a.m - 4:30 p.m.

"Preventive Maintenance keeps you on the road"

FOX LAKE RESERVE

**Call
864-9090**
*for an
appointment*

Find Your True North.



Proudly servicing your Real Estate needs
in Chapleau and surrounding areas!

www.EXITRealtyTrueNorth.com (dir) 705-971-9351
(off) 705-942-6500



Community Services

Services communautaires



Bibliothèque George L. Evans Library
20 Pine Street West; Tel: 705-864-0852
www.chapleaulibrary.ca



Bureau de dentiste de Chapleau Dental Offices
2 Broomhead Road; Tel: 705-864-1808
128 Beech Street; Tel: 705-864-2800



Centre Civique de Chapleau Civic Centre
20 Pine Street West; Tel: 705-864-1330
www.chapleau.ca



Chapleau Child Care Centre de Garde d'Enfants
28 Golf Course Road; Tel: 705-864-1886
www.chapleauchildcare.ca



Conseil des Services du District de Manitoulin-Sudbury District Services Board
12 Birch Street; Tel: 705-864-0430
www.msdsb.net



Équipe de santé familiale de Chapleau & District Family Health Team
2 Broomhead Road; Tel: 705-864-0210



Meals of Hope Food and Clothing Bank
9 Elm Street; Tel: 705-864-0828



Services de santé de Chapleau Health Services
6 Broomhead Road; Tel: 705-864-1520
www.sschs.ca



CHADWIC Home
1-800-461-2242



Towing / Remorquage
AMS Towing and Recovery: 705-864-1477



Transit
Handi-Transit Bus Service: 705-864-4477



VIA Rail
Dufferin Street; 1-888-842-7245 www.viarail.ca



Emergency Services
In case of emergency, call 911. For medical emergencies, Chapleau Health Services also operates a 24 hour emergency room at 6 Broomhead Rd.
To report a forest fire, call 310-3473.
Services d'urgence
En cas d'urgence, appelez le 911. Pour les urgences médicales, les Services de santé de Chapleau ont une salle d'urgence ouverte 24 heures sur 24 au 6 chemin Broomhead.
Pour signaler un incendie de forêt, appelez le 310-3473.



Landfill Site
The municipal landfill site is located on Hwy 129 about 10 km out of town. To access the dump, tokens must be purchased at the Chapleau Civic Centre, located at 20 Pine St.

Site d'enfouissement
Le site d'enfouissement municipal (dépotoir) est situé sur la route 129 à une dizaine de kilomètres de Chapleau. Pour avoir accès, vous aurez besoin de jetons. Ils doivent être achetés au Centre civique de Chapleau, 20, rue Pine.



Compass
34 Birch Street E; 1-800-815-7126



Chapleau Museum/Travel Information Centre
94 Monk Street, Open Seasonally

Local Clubs & Community Organizations

Clubs locaux et organismes communautaires

Name/nom	Address/adresse	Phone	For more info/pour plus de renseignements
Aboriginal People's Alliance of Northern Ontario (APANO)	8 Lorne Street N.	705-864-0556	www.apano.ca
Chapleau Arctic Watershed Snowmobile Club			Find us on Facebook
CWL, Sacred Heart Church Parish Council		705-864-0747	
Centre Culturel Louis-Hémon	69 Birch Street	705-864-1126	http://www.quatrain.org/cclh/
Chapleau Association for Community Living	92 Lorne Street S.	705-864-2932	www.northeasthealthline.ca
Chapleau Curling Club	4 Maple Street	705-860-9417	Find us on Facebook
Chapleau Figure Skating Club	4 Maple Street		Find us on Facebook
Chapleau Fire Fighters Association	20 Pine Street W.	705-864-0830	
Chapleau General Hospital Foundation	6 Broomhead Road	705-864-3053	www.sschs.ca
Chapleau Gymnastics Club	4 Maple Street		Find us on Facebook
Chapleau Girls Hockey Association	4 Maple Street		Find us on Facebook
Chapleau Hub	4 Pine Street	705-904-1000	Find us on Facebook
Chapleau Metis Council	61 Birch Street	705-864-0952	www.metisnation.org
Chapleau Minor Hockey Association	4 Maple Street		Find us on Facebook
Chapleau Senior Citizens Club	101 Pine Street E.		Find us on Facebook
Chapleau Ski Club	274 Martel Road	705-864-0707	www.fb.com/ChapleauSkiClub
Club Maria Chapdelaine	101 Pine Street E.	705-864-1898	https://www.quatrain.org/reso/maria.html
Independent Order of Odd Fellows			
Kebsquasheshing Golf Club	100 Golf Course Rd.	705-864-0600	Find us on Facebook
Kinniwabi Long Rifles Gun Club	Corset Lake, Hwy 101 W.		Find us on Facebook
New Horizon Rebekah Lodge 391		705-864-0170	
Royal Canadian Legion, Branch #5	33 Young Street		www.fb.com/RCLBr5
Rotary Club of Chapleau			www.fb.com/ChapleauRotaryClub
Technique School of Dance			Find us on Facebook
Union culturelle des Franco-Ontariennes			https://www.quatrain.org/reso/ucfo.html
Churches and Faith Groups / Églises et groupes religieux			
Chapleau Pentecostal Church	9 Elm Street	705-864-0828	Find us on Facebook
Community Bible Chapel	117 King Street	705-864-2875	
Kingdom Hall of Jehovah's Witnesses	32 Beech Street		www.jw.org
Sacred-Heart Church	26 Lorne Street	705-864-0747	
St. Mary's Anglican Catholic Church			
Trinity United Church	Beech and Lorne Street	705-864-1221	www.angelfire.com/on/trinityuc/

Photo Credit: Chantal Wiecha

Municipal Parks



Chapleau River Waterfront Park
Adjacent to the Civic Centre on Pine Street West



Louis Dubé Peace Park
Located at Connaught and Birch Street



Jacquislan Park
Richard and Demers Street



Grinton Park
4 Maple Street



Michael Levesque Hiking Trails
The Michael Levesque Trails are great for hiking in the Summer and Fall and snowshoeing during the Winter.

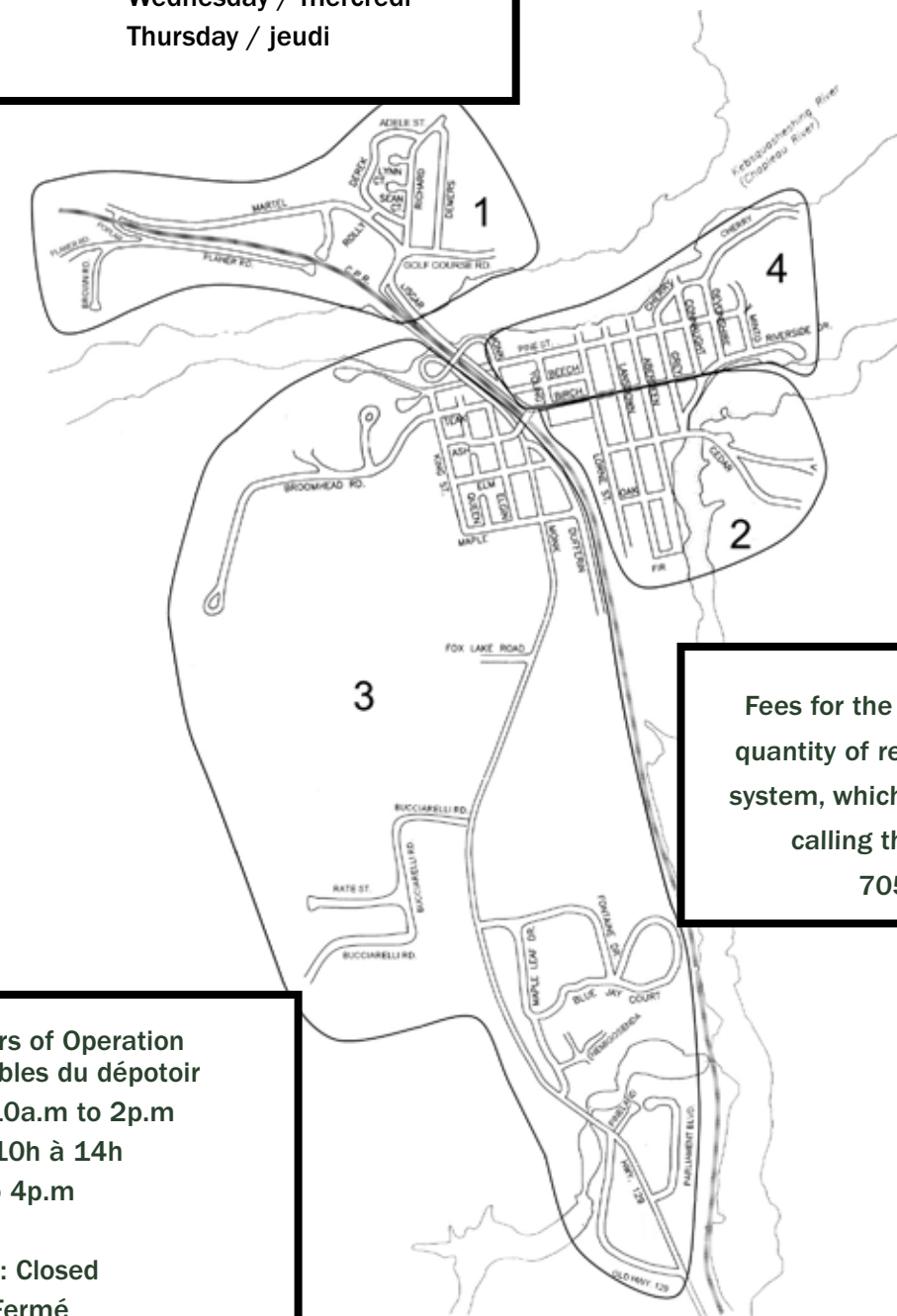
Find them on the Map on Page 3-4



Refuse Collection & Landfill Schedule

Horaire de la collecte des déchets et du dépôt

Area / Secteur résidentiel	Day (evening) / Jour (soir)
1	Sunday / dimanche
2	Tuesday / mardi
3	Wednesday / mercredi
4	Thursday / jeudi



Fees for the landfill are based on quantity of refuse and use a token system, which can be purchased by calling the Civic Centre at 705-864-1330

Landfill Hours of Operation
Heures ouvrables du dépôt

Tuesdays - Fridays: 10a.m to 2p.m
mardi au vendredi: 10h à 14h

Saturdays: 10a.m to 4p.m
samedi: 10h à 16h

Sundays & Mondays: Closed
dimanche et lundi: Fermé

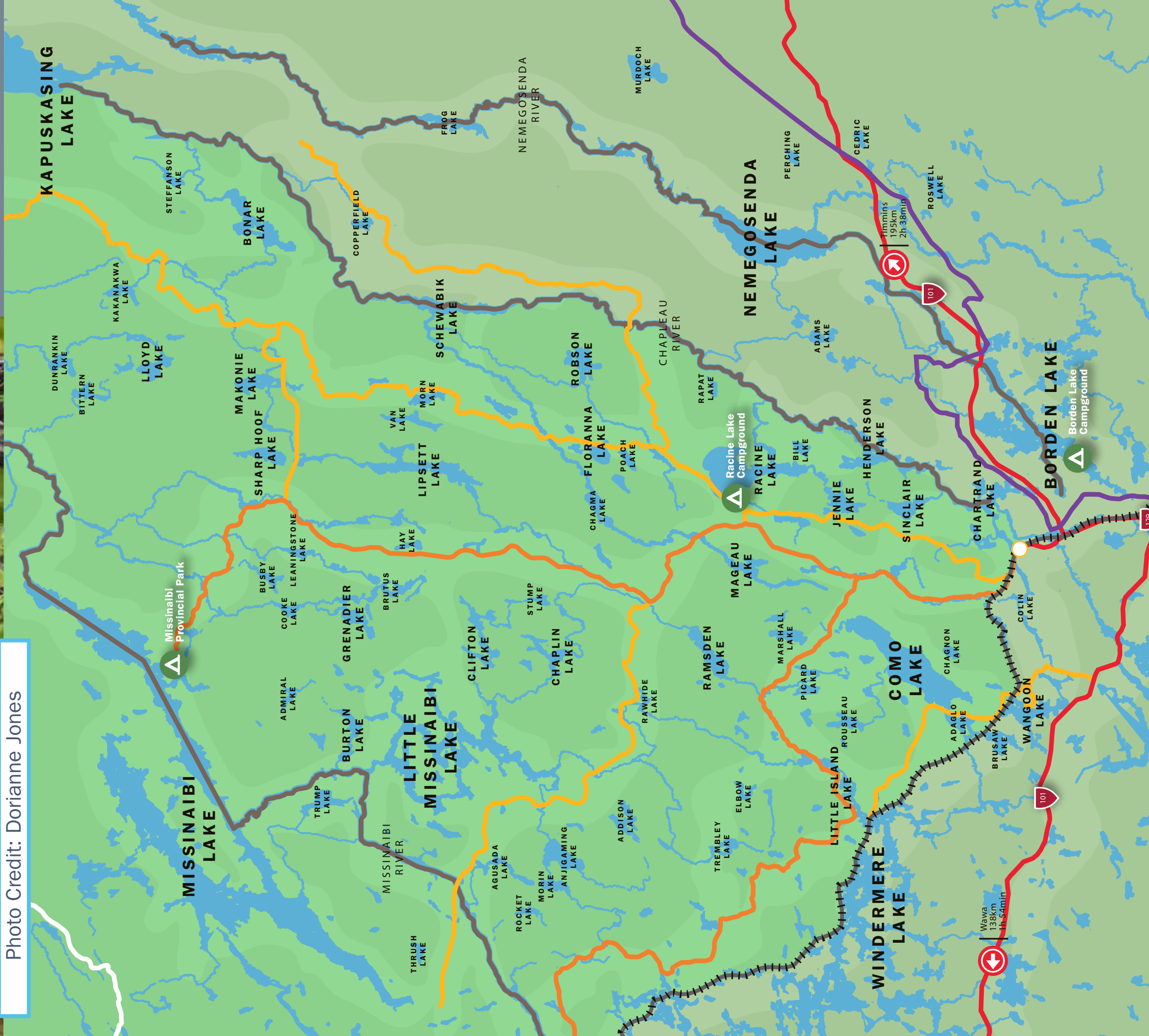


Chapleau

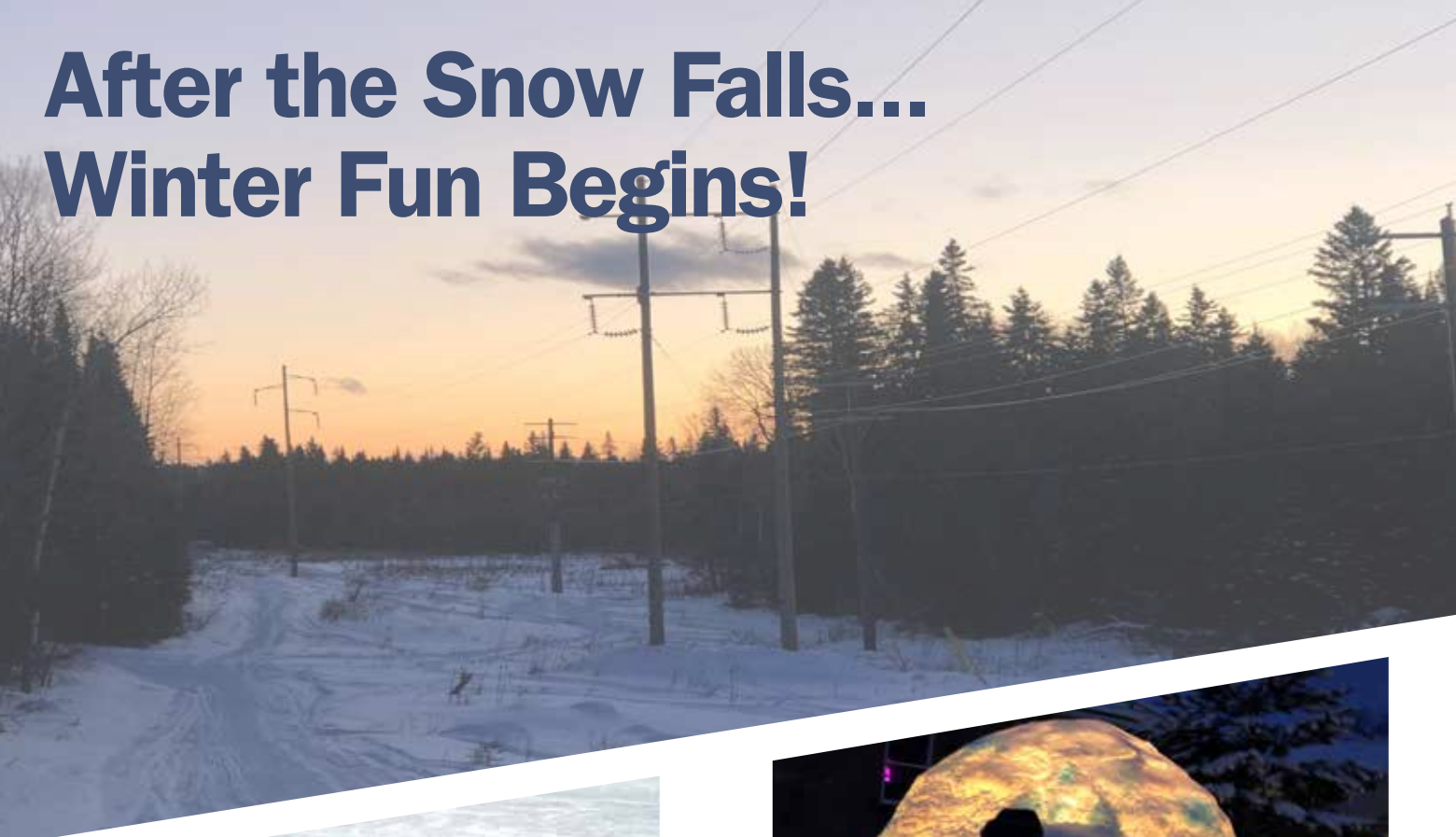
Photo Credit: Dorianne Jones

Chapleau Wilderness Legend

- Main Roads
- Minor Roads
- Highway
- Snowmobile Trail
- Portage Route
- Campground



After the Snow Falls... Winter Fun Begins!



Skiing & Snowboarding

Skiing and Snowboarding is available at 274 Martel Road thanks to the Chapleau Ski Club. They maintain the local ski hill and miles of cross country ski trails. For more information on the club's activities go to www.fb.com/ChapleauSkiClub

Snowmobiling

Snowmobiling has long been a reason to visit Chapleau. We are located on the C101D Trail in the Algoma region. If you are travelling between Wawa and Sault Ste. Marie we are 96 km's North-East of Halfway Haven. For travellers headed North to Timmins, the Chapleau Arctic Watershed Snowmobile Club maintains the trail to Foleyet.

Chapleau has many snowmobile-friendly features: Fuel, restaurants and motels right beside the trail

- Lodges open year-round
- A network of snowmobile-friendly streets
- Parts and mechanics available locally

To check the current status of the trails or to buy your trail pass go to www.ofsc.on.ca



Figure Skating

The Chapleau Figure Skating club has many childrens programs to offer and complete every season with a year-end ice show. Look for the Chapleau Figure Skating Club on Facebook.

Hockey

Hockey is a great passion in Chapleau. Very few weeks go by when the Moore Arena is not buzzing with this favourite sport! Connect with the Chapleau Minor Hockey Association on Facebook.

Curling

Curling in Chapleau has been going on for over 100 years and is still going strong. Be sure to join the Chapleau Curling Club for a Friday night social whether you curl or not! For more information go to www.fb.com/CurlingClubChapleau

Summertime, Sunshine and Fun!

Access our river system through the Lorne Street Boat Launch.



Fishing

The lakes and rivers in the Chapleau area provide anglers with a variety and abundance of fish. Species include, walleye, northern pike, yellow perch, whitefish, smallmouth bass and multiple species of trout.

Canoeing/Kayaking

With all of Chapleau's waterways, it's not surprising that canoeing and kayaking are very popular pasttimes. Become one with nature and the water as you paddle across a lake or down a river.

Baseball

Chapleau features a lighted baseball diamond, adjacent to the Recreation Centre. The lights gleam with excitement during the summer months as the field hosts a mixed slow-pitch league as well as a children's t-ball league.



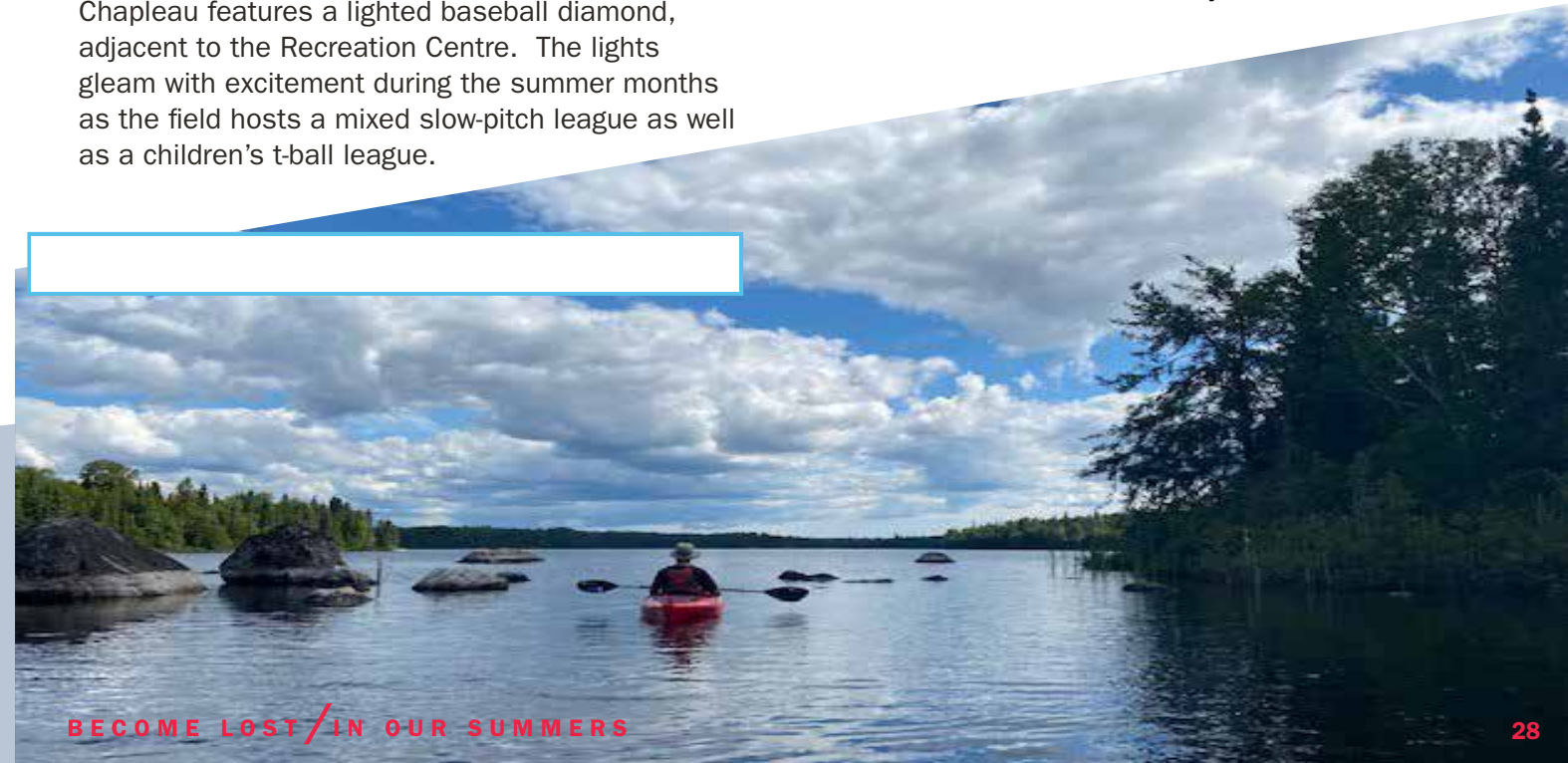
Photo Credit: Diana McCarthy

Golfing

Alongside the Kobsquasheshing River lies the Kobsquasheshing Golf Club. The Golf Club is a nine-hole course, featuring weekly scrambles, Friday socials and tournaments.

Berry Picking

Chapleau has a plethora of berry picking opportunities. June to August is berry picking season. Starting with wild strawberries, then followed by blueberries and raspberries. It's a great way to spend some time outdoors. Just watch out for the bears, they like berries too!



Provincial Parks

Les parcs provinciaux

To make reservations or to find more information, please visit www.OntarioParks.com or call 1-888-668-7275.

Pour effectuer une réservation ou pour obtenir plus de renseignements, visitez www.OntarioParks.com ou appelez le 1-888-668-7275.

Missinaibi Provincial Park (No reservations)

Missinaibi is a 500 km long provincial park that encompasses large lakes, scenic waterfalls and outstanding whitewater. Campers from far and wide come to enjoy the unparalleled fishing on Missinaibi Lake, for Lake Trout, Walleye, and Northern Pike. This large lake also has over 100 Indigenous pictographs

Open Dates: Mid May – Mid September

Local Contact: 705-864-3114

Parc provincial Missinaibi

Missinaibi est un parc provincial d'environ 500 km de long d'où vous y trouverez de vastes lacs, de splendides chutes d'eau ainsi que des cours d'eau époustouflant, dont certains de descente en eaux blanches. Les campeurs venant d'un peu partout profitent de la pêche inégalée sur le lac Missinaibi. Ce grand lac a également plus de cent pictogrammes autochtones.

Les dates d'ouverture: mi-mai à mi-septembre

Contact local: 705-864-3114

Wakami Lake Provincial Park

This beautiful, peaceful northern park is located on Highway 667 between Chapleau and Sultan, Ontario. Wakami offers both campground and backcountry camping. Visitors also enjoy exceptional fishing, hiking, and a Historic Logging Exhibit. Motorboats, canoes and kayaks are also available for rent from the park store.

Open Dates: Mid May – Mid September

Local Contact: 705-864-3114

Parc provincial Wakami Lake

Ce beau parc paisible du Nord est situé sur la route 667 entre Chapleau et Sultan, Ontario. Wakami offre à la fois des terrains de camping et du camping sauvage. Les visiteurs aiment la pêche exceptionnelle, la randonnée pédestre ainsi que le musée d'exploitation forestière. Vous pouvez également louer des bateaux à moteur, des canoës et des kayaks.

Les dates d'ouverture: mi-mai à mi-septembre

Contact local: 705-864-3114

Potholes Provincial Park

Potholes is a perfect rest stop when traveling between Wawa and Chapleau. A short walk with interpretive signs leads you to the potholes which were formed by glacial erosion.

Open Dates: Mid May – Mid September

Local Contact: 705-864-3114

Parc provincial Potholes

C'est un bel endroit pour arrêter lorsque vous voyagez entre Wawa et Chapleau. Une courte promenade sur un sentier pédestre en lisant les panneaux d'interprétation vous mène à des formations de roches sans pareil.

Les dates d'ouverture: mi-mai à mi-septembre

Contact local: 705-864-3114

Ivanhoe Lake Provincial Park

Located between Chapleau and Timmins, this park offers hiking, canoeing, swimming, boating, fishing, biking, birding, and hunting. Canoes and paddle-boats can be rented at the park store. Hiking trails range from easy to difficult.

Open Dates: Mid May – Mid September

Local Contact: 705-899-2644

Parc provincial Ivanhoe Lake

Situé entre Chapleau et Timmins, ce parc offre plusieurs activités telles que randonnée, canoë, baignade, pêche, vélo, observation des oiseaux et chasse. Des canoës et des pédalos peuvent être loués à la boutique du parc. Les sentiers de randonnée pédestre ont différents niveaux de difficulté.

Les dates d'ouverture: mi-mai à mi-septembre

Contact local: 705-899-2644

LA MAISON DU BOULEAU VOUS ACCUEILLE
SUR LA LUNE À CHAPLEAU, ON

*Maison de 3 chambres à coucher
hébergement de location provisoire
pour affaires ou plaisir*

TARIFS JOURNALIERS ET MENSUELS
— CONTACTEZ-NOUS —

(705) 465-3349
SUPPORT@THEBIRCHTREEHOUSE.CA

TOURNÉE VIRTUELLE YOUTUBE
@THEBIRCHTREEHOUSE
HTTPS://WWW.FACEBOOK.COM/THEBIRCHTREEHOUSE

Open from May to October
705 864 1283

A True Northern Adventure!

Chapleau Lodge

LAKESIDE CADINS • FISHING ADVENTURES

John & Carmelle
P.O. Box 640 Chapleau,
Ontario Canada P0M 1K0
fishing@chapleaulodge.com




**Des écoles accueillantes,
dynamiques et ancrées
dans la communauté !**


ÉSC TRILLIUM
705-864-1211

ÉCOLE SACRÉ-COEUR
705-864-0281

CHAPLEAU

NOUVELON.CA   

 CONSEIL
SCOLAIRE
CATHOLIQUE
NOUVELON




**Chapleau Child Care Centre
de Garde d'Enfants**

The Chapleau Child Care Centre de Garde d'Enfants offers a variety of programs to the community which encompass the needs of parents, caregivers and children from birth to twelve years of age.

Services Include:
English Child Care Programs
French Child Care Programs
EarlyOn Child and Family Programs

For more information we can be reached at:
28 Golf Road / P.O. Box 969
Chapleau, Ontario P0M1K0
Tel: (705) 864-1886 | Fax: (705) 864-1819
chapleauchildcare@bellnet.ca | www.chapleauchildcare.ca



**NORTHERN APPAREL
VALENTINE FITS**

INSPIRED BY MY ROOTS, THE FRESH NORTHERN AIR, AND FEELINGS OF BOTH ESCAPE AND BELONGING ALL AT ONCE

WHERE YOU FIND YOUR FIT ON YOUR OWN, YET DISCOVER YOUR PACK OF LIKE-MINDED PEOPLE

UNITED IN THE PASSION AND EXCITEMENT OF THE OUTDOORS, DISCOVER YOURSELF THROUGH PERSISTENCE AND CREATING CONNECTIONS

ALL WHILE EMBRACING NATURE

JOIN THE CREW
VALENTINEFITS.COM

VALENTINE FARMS

VF90° CREW
GEAR UP & GET OUTSIDE

JOIN THE VF90° CREW ON FACEBOOK FOR EXCLUSIVE OFFERS, DISCOUNTS & GIVE AWAYS!

**BED & BREAKFAST
VALENTINE FARMS**

MY GRANDPARENTS HARD WORK AND DEDICATION AS EGG FARMERS AND HOSTS OF A BED AND BREAKFAST IN A SMALL NORTHERN TOWN, LED ME TO ENVISION MY OWN COMPANY AND VALENTINE FITS WAS CREATED!

FIND YOUR FIT
valentinefits.com

<p>Lacroix Bus Lines/Lloyds of Wawa</p>	<p>CHAPLEAU SEPTIC AGGREGATE SERVICES 705-864-1114</p>	<p>MISSINAIBI HEADWATERS INCORPORATED</p>	<p>Chapleau Village Shops SOUVENIRS GIFTS PPE JEWELRY WORK BOOTS</p>
<p>BUS SHUTTLES ***** CHARTERS</p>	<ul style="list-style-type: none"> • SEPTIC PUMPING FOR COTTAGES AND HOMES • NEW PORTA-POTTIES FOR RENT FOR CONTRACTORS AND SPECIAL EVENTS • AGGREGATE DELIVERIES-A GRAVEL, B GRAVEL, CLEAR STONE, PIT RUN, TOP SOIL • CIRCUS TENT AVAILABLE FOR EVENTS (180X60) 	 <ul style="list-style-type: none"> • EQUIPMENT RENTAL • CIVIL CONSTRUCTION • CONSTRUCTION • BRUSHING • GRADING • SEPTIC INSTALL 	<p>SOURCE</p> <p>FOR ALL YOUR ELECTRONICS LAPTOPS - TV'S - GAMES - CHARGERS - MUCH MORE</p>
<ul style="list-style-type: none"> • TRANSPORTATION FOR MINE SITES • TRANSPORTATION FOR CONSTRUCTION SITES - MORE • COACH AVAILABLE • AIRPORT SHUTTLES • EXECUTIVE EVENTS • COMPANY FUNCTIONS 		<p>YETI</p> <p>WE ARE YOUR YETI DEALER: COOLERS - TUMBLERS - BOTTLES - SUBMERSIBLE BAGS - ACCESSORIES</p>	

(1) 888 - 334 - 1114
Bignucolo Group

Celebrating 70 Years in Chapleau

The Rotary Club of Chapleau is a proud sponsor of the following local initiatives, sports and community organizations: Services de santé de Chapleau Health Services (including the ultrasound campaign and the Caring Project), Waterfront Revitalization (2017), Chapleau Recreation Centre Renovation (2018) Chapleau Arctic Watershed Snowmobile Club, Chapleau Ski Club, Chapleau Figure Skating Club, Minor Hockey, Chapleau Chicks Girls' Hockey, school bursaries, Ivan the Eye Van, Adopt a Highway, and financial support for families in need.

International fundraising includes: contributions to Shelterhouse, having... international projects.

ROTARY

GOLD RUSH

Nationals

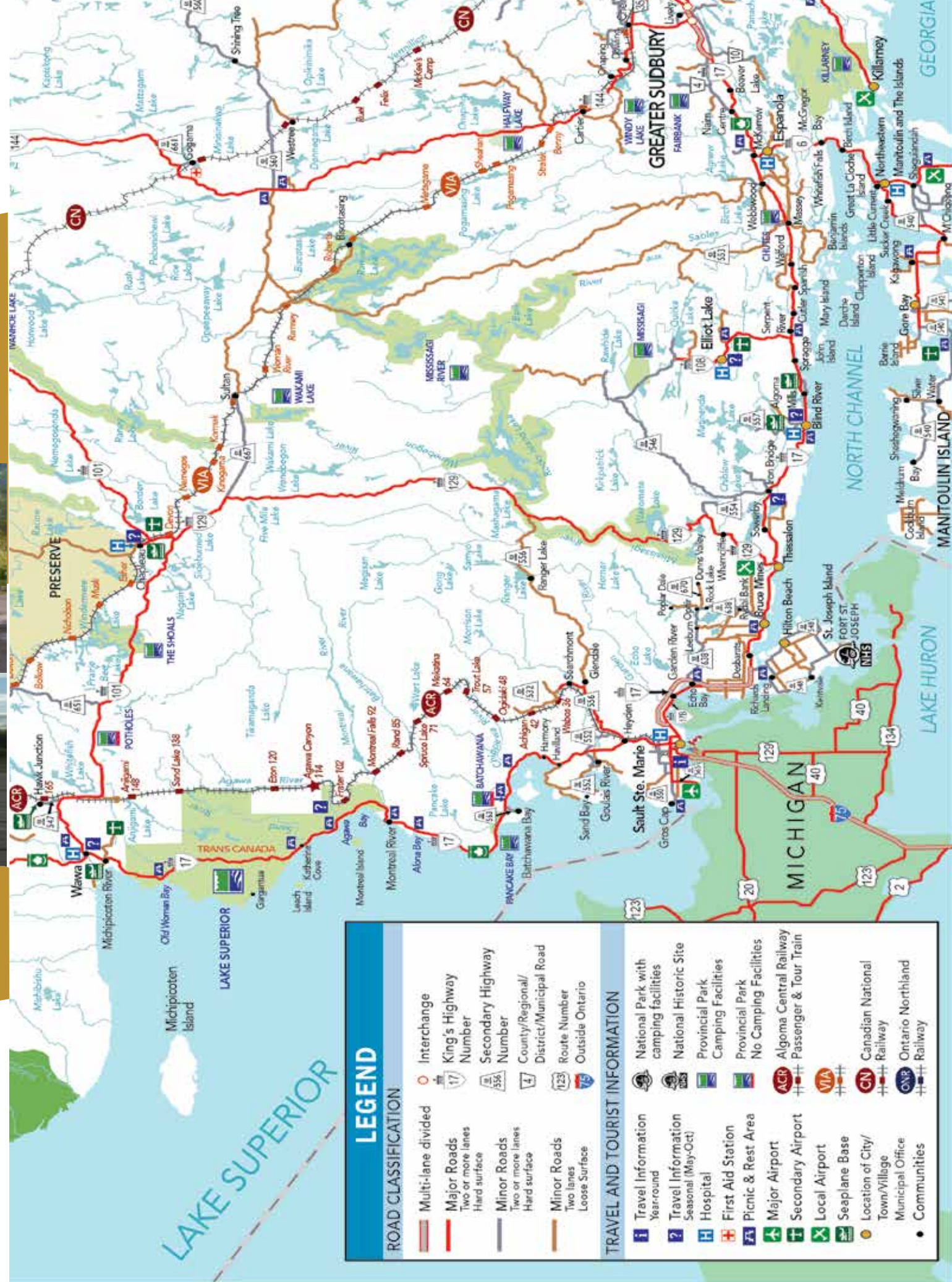
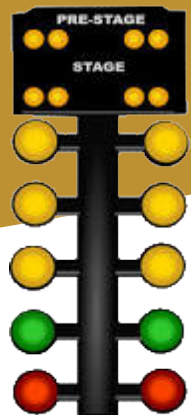
DRAG RACE



CHAPLEAU AIRPORT
JULY 14 -15 -16, 2023
 700 Airport Road, Hwy 101



CATEGORIES:
 Super Pro, Semi Pro, Street, Sleds & Bikes, Jr. Dragsters,
 Golf carts, Open Jr.





NewmontTM
PORCUPINE

Creating value and improving lives through responsible and sustainable mining.

We are proud of our record of safe, responsible operations everywhere we do business, including the Chapleau Area of the Borden Mine.

- Contributing to long-term sustainable, social and economic benefits in the communities where we operate through partnerships and donations to community development, education and health.
- Building open and trusting relationships with stakeholders through respectful dialogue and effective engagement with our stakeholders.
- Committing to the protection of life, health and the environment for present and future generations.